

Single Barn Door Track Required Information

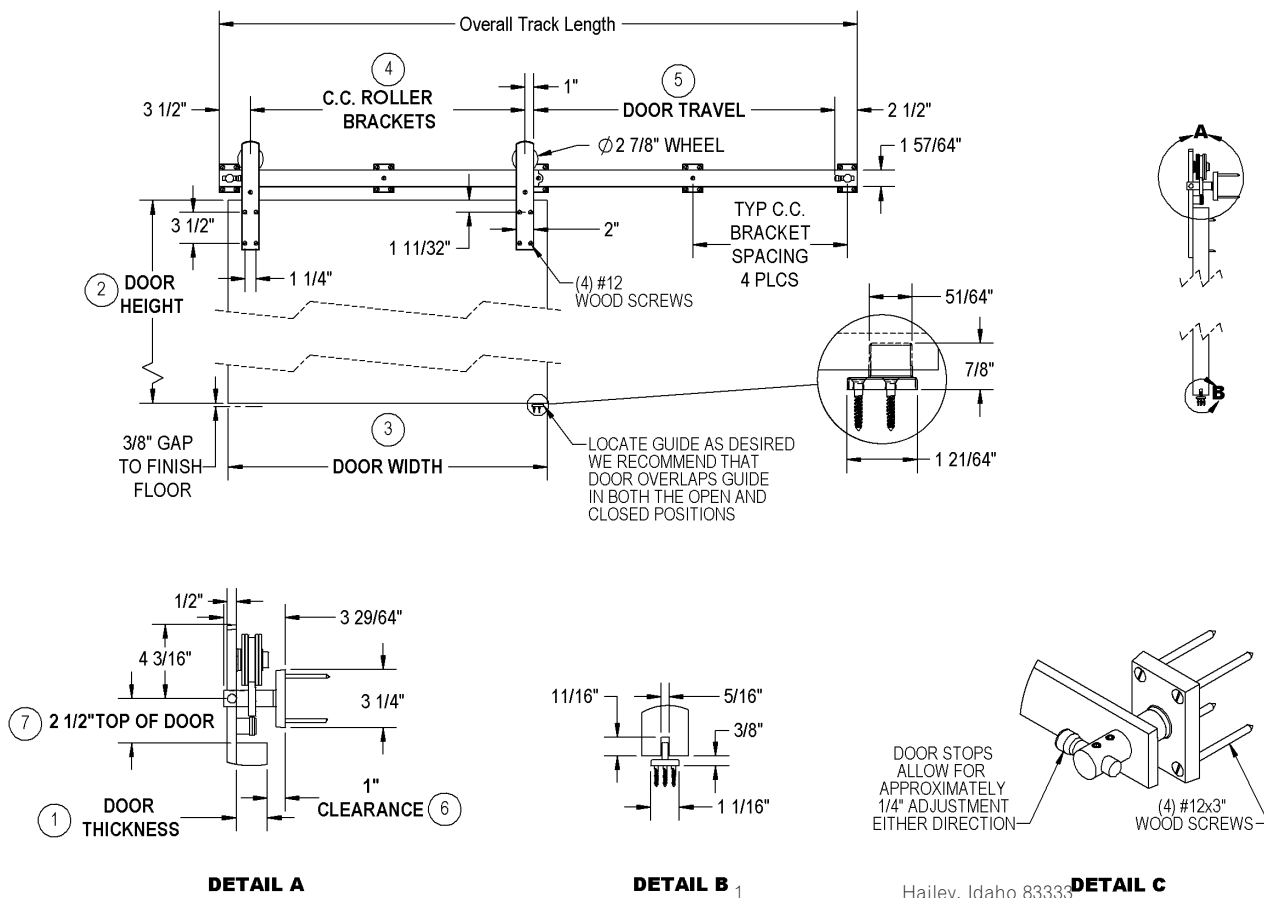
- Proper header must be installed for full length of track.
- We recommend a flush pull on interior side of door. If an interior grip is desired verify adequate clearance in open position.

Provide the following information in order to receive a customized drawing for client final approval.

1. Door Thickness _____
2. Door Height _____
3. Door Width _____
4. C to C distance of roller brackets (typically centered on door stile) _____
5. Door travel (max. travel should be 1" less than door width to ensure door does not come off floor guide) _____
6. Clearance between door and mounting surface (see Detail A, 1" unless otherwise specified (3/8" minimum)) _____
7. Center line of mounting brackets to top of door (See Detail A, 2 1/2" unless otherwise specified) _____

Note to determine overall track length:

LINE #4 _____ + LINE #5 _____ + 7 INCHES = _____ OVERALL TRACK LENGTH



ROCKY MOUNTAIN®

H A R D W A R E

1020 Airport Way Hailey, Idaho 83333 USA
 toll free 888.788.2013 • ph. 208.788.2013 • fax 208.788.2577
 info@rockymountainhardware.com
 www.rockymountainhardware.com

201701

Double Barn Door Track Required Information

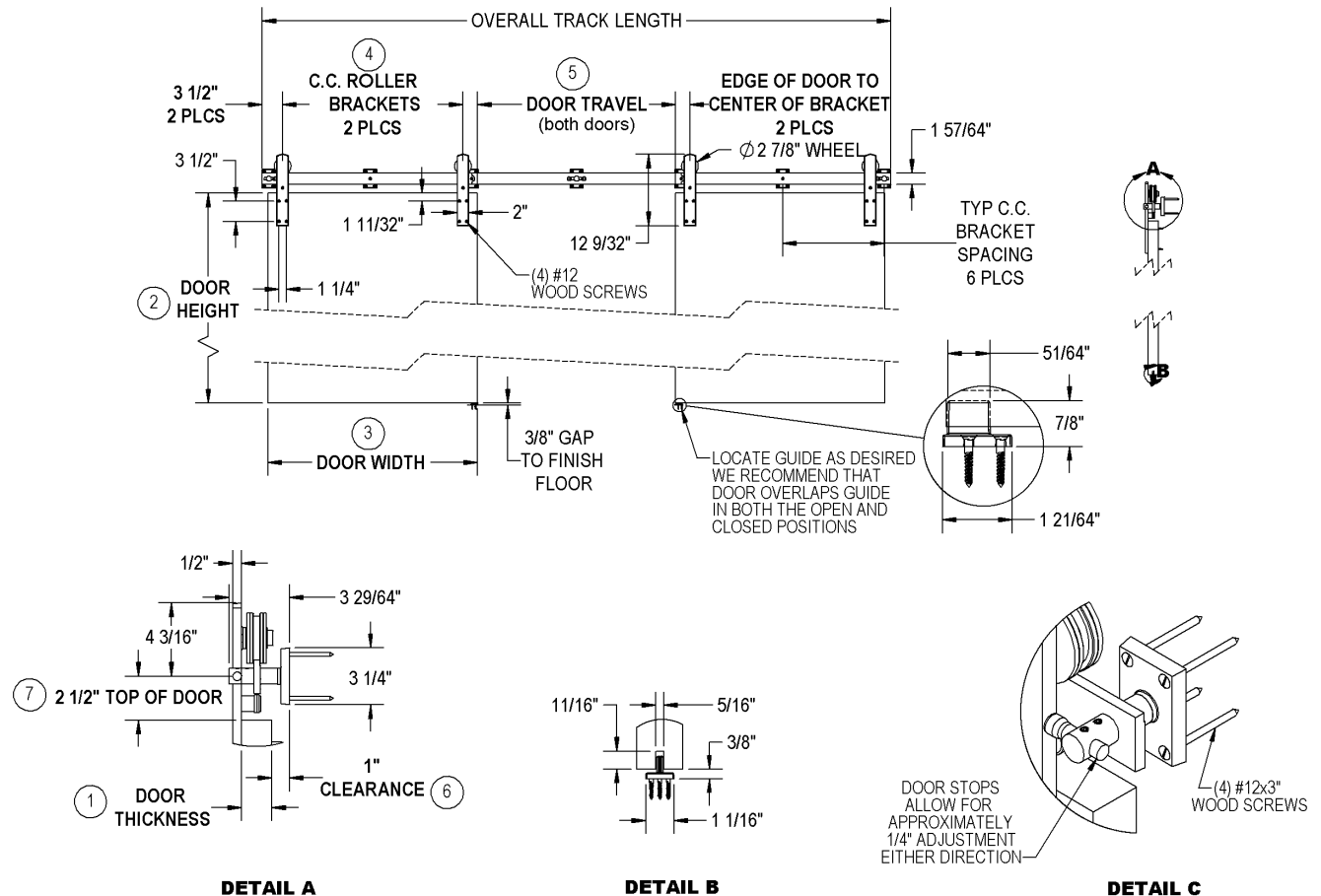
- Proper header must be installed for full length of track.
- We recommend a flush pull on interior side of door. If an interior grip is desired verify adequate clearance in open position.

Provide the following information in order to receive a customized drawing for client final approval.

1. Door Thickness _____
2. Door Height _____
3. Door Width _____
4. C to C distance of roller brackets (typically centered on door stile) _____
5. Door travel: Both doors (max. travel for each door should be 1" less than door width to ensure door does not come off floor guide) _____
6. Clearance between door and mounting surface (see Detail A, 1" unless otherwise specified (3/8" minimum)) _____
7. Center line of mounting brackets to top of door (See Detail A, 2 1/2" unless otherwise specified) _____

Note to determine overall track length:

LINE #4 x 2 _____ + LINE #5 _____ + (LINE #3 - LINE #4) _____ + 7 INCHES = _____ OVERALL TRACK LENGTH



Hailey, Idaho 83333

ROCKY MOUNTAIN®

1020 Airport Way Hailey, Idaho 83333 USA
 toll free 888.788.2013 • ph. 208.788.2013 • fax 208.788.2577
 info@rockymountainhardware.com Hailey, Idaho 83333

H A R D W A R E

www.rockymountainhardware.com

201701