

**Sample Order / Cheat Sheet
N Window Hardware 1/2**

QUOTE ORDER

NAME: _____
ADDRESS: _____
OFFICE PHONE: _____
FAX PHONE: _____
JOB PHONE: _____

PO# _____
DELIVERY: _____
ADDRESS: _____



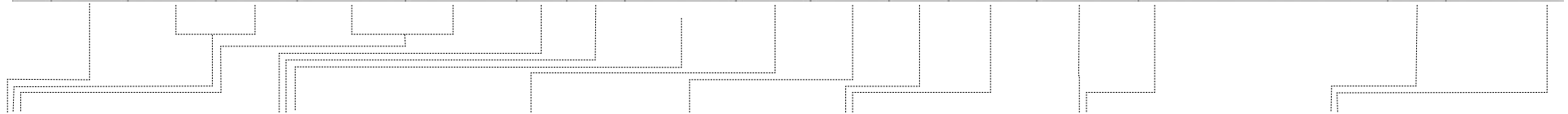
HARDWARE WORK ORDER

Toll Free 888.788.2013 or 208.788.2013; Fax 208.788.2577

ORDER DATE: _____
CONTACT: _____
JOB NAME: _____

2002.12.04

LINE NO.	FUNCTION	HANDLE		ESCUTCHEON		METAL	PATINA	HANDING OR LENGTH	BACKSET	DOOR THICKNESS	LOCK TYPE	DEAD BOLT TRIM	DESCRIPTION	LOCATION #	QTY.	PRICE QUOTED
		EXTERIOR	INTERIOR	EXTERIOR	INTERIOR											
1	WN	LW40		EW105		B	D	R		214					1	186.00
2	AC					B	L	R					WC200		1	165.00
3	AC					W	L						WC100		1	160.00
4	LC	LC300				W	D	R					LC305		1	274.00
5	AC					B	M						SL100		1	99.00



FUNCTION

AC = Accessory
CA = Casement Adjuster
LC = Casement Latch
WN = Window Trim Set

HANDLE

For a list of Levers available for Window Hardware, see next page.
For specifications, refer to Section A.

ESCUTCHEONS

For a list of Escutcheons available for Window Hardware, see next page.
For configurations, specifications, and pricing, refer to content of this section.

METAL

B = Silicon Bronze
W = White Bronze

PATINA

L = Light
M = Medium
D = Dark
R = Rust
BB = Brushed
DL = Dark Lustre

HANDING / LENGTH

See Hinged Door Handing diagram, next page.

L = Left Hand
R = Right Hand
LR = Left Hand Reverse
RR = Right Hand Reverse

Casement Adjuster lengths:
10"
12"
14"
20"

BACKSET

Not Applicable

DOOR THICKNESS

138 = 1 3/8"
112 = 1 1/2"
134 = 1 3/4"
178 = 1 7/8"
2 = 2"
214 = 2 1/4"
212 = 2 1/2"
258 = 2 5/8"
234 = 2 3/4"
3 = 3"

Up-charge for sizes below.
Call for pricing.
314 = 3 1/4"
312 = 3 1/2"
4 = 4"
N = No

LOCK TYPE

Not Applicable

DEAD BOLT TRIM

Not Applicable

DESCRIPTION

For a list of available descriptions, see next page.

LOCATION #

QTY

Number of each desired

PRICE

\$ List price each

HANDLES

LW05 = Mini Ellis Lever
 LW10 = Mini Euro Lever
 LW15 = Mini Legacy Lever
 LW20 = Mini French Lever
 LW33 = Mini Reed Lever
 LW37 = Mini Strap Lever
 LW40 = Mini Classic Lever
 LW50 = Mini Acanthus Lever
 LW60 = Mini Harrington Lever
 LW63 = Mini Olympus Lever
 LW65 = Mini Falcon Lever
 LW80 = Mini Monarch Lever
 LW85 = Mini Ribbon & Reed Lever
 L104 = Hook Lever
 T300 = T Handle
 LC300 = Casement Latch Lever

ESCUTCHEONS

Rectangular

EW101 = 1 1/4" x 3" Rect (WE)
 EW103 = 1 3/8" x 4 1/2" Rect (WE)
 EW105 = 1 1/2" x 3" Rect (WE)
 EW108 = 1 1/2" x 4 1/2" Rect (WE)

Stepped

EW308 = 1 1/2" x 4 1/2" Stepped (WE)

Metro

EW225 = 1 1/4" x 4 1/2" Metro (WE)
 EW202 = 1 1/2" x 4 1/2" Metro (WE)

Curved

EW507 = 1 1/4" x 4 1/2" Curved (WE)
 EW501 = 1 3/8" x 4 1/2" Curved (WE)
 EW508 = 1 1/2" x 4 1/2" Curved (WE)

Arched

EW720 = 1 3/16" x 3 3/4" Arched (WE)
 EW707 = 1 3/8" x 4 1/2" Arched (WE)
 EW705 = 1 1/2" x 3" Arched (WE)
 EW708 = 1 1/2" x 4 1/2" Arched (WE)

Ellis

EW005 = 1 1/2" x 4 1/2" Ellis (WE)

Convex

EW30500 = 1 1/2" x 3 3/4" Convex (WE)

Corbel Arched

EW30600 = 1 1/2" x 3 3/4" Corbel Arched (WE)

Corbel Rectangular

EW30700 = 1 1/2" x 3 3/4" Corbel Rect (WE)

Key

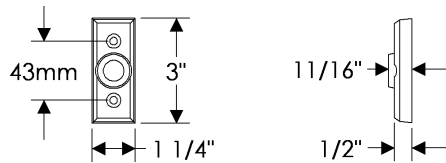
(WE) = Window Escutcheon

DESCRIPTION

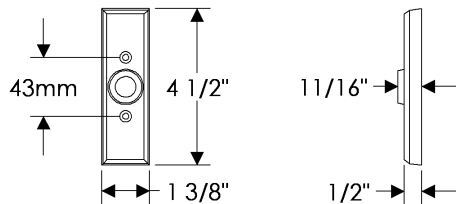
LC303 = Mortise Strike
 LC305 = Universal Strike
 LC307 = Surface Strike
 SFP100 = Sash Lift
 SL100 = Sash Lock
 DHSL100 = Double-Hung Sash Lock
 DHSL200 = Double-Hung Sash Lock
 DHSL700 = Double-Hung Sash Lock
 ULL200 = Sash Lock (Pella)
 LC500 = Sash Lock (Loewen)
 LC510 = Sash Lock (Truth)
 LC600 = Sash Lock (Truth)
 LC730 = Sash Lock (Sierra Pacific)
 LC710 = Tilt Lock (Sierra Pacific)
 WC100 = Truth Window Crank & Cover
 WC140 = Marvin Window Crank & Cover
 WC141 = Marvin Window Crank & Cover
 WC160 = Truth Window Crank & Cover
 WC200 = Pella Window Crank & Cover
 WC400 = Marvin Window Crank & Cover
 WC450 = Truth Window Crank & Cover
 WL10 = Sash Lock (Marvin)
 WL180 = Sash Lock (Marvin)
 WL210 = Sash Lock (Marvin)
 WL211 = Sash Lock (Marvin Dummy)
 WD10 = Sash Lock (Marvin)
 WD130 = Sash Lock (Marvin)
 WSL10 = Sash Lift (Marvin)
 WSL20 = Sash Lift (Marvin)
 WSL40 = Sash Lift (Marvin)

- Price includes your choice of any lever.
- Combinations are shown with L104 Hook Lever for illustrations only. Refer to Section A for desired lever.
- Specify metal, patina, sash thickness, handing, screws, spindle length, and type of window designed for.
- Supplied with M5 x .8 x 40 mm screws and 7 mm spindle unless otherwise specified.
- Levers index at 3, 6, 9, and 12 o'clock positions.

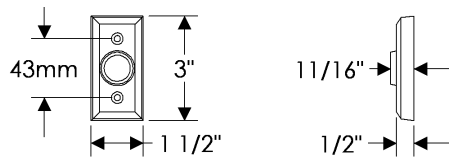
Window Trim Sets



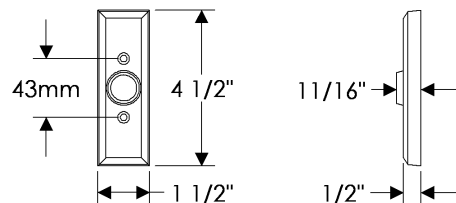
EW101 Rectangular Window Escutcheon
1 1/4" x 3" \$ 314.00



EW103 Rectangular Window Escutcheon
1 3/8" x 4 1/2" \$ 314.00



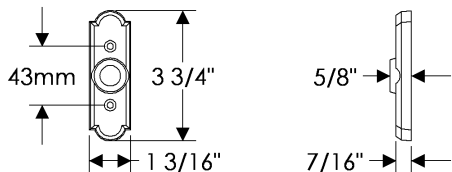
EW105 Rectangular Window Escutcheon
1 1/2" x 3" \$ 186.00



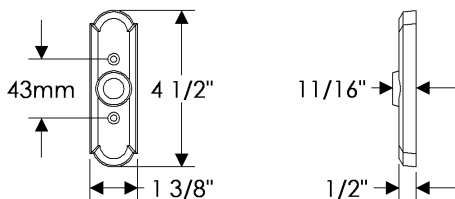
EW108 Rectangular Window Escutcheon
1 1/2" x 4 1/2" \$ 196.00

- Price includes your choice of any lever.
- Combinations are shown with L104 Hook Lever for illustrations only. Refer to Section A for desired lever.
- Specify metal, patina, sash thickness, handing, screws, spindle length, and type of window designed for.
- Supplied with M5 x .8 x 40 mm screws and 7 mm spindle unless otherwise specified.
- Levers index at 3, 6, 9, and 12 o'clock positions.

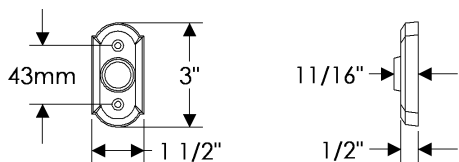
Window Trim Sets



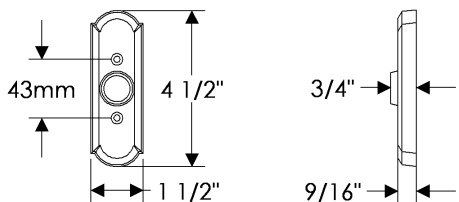
EW720 Arched Window Escutcheon
1 3/16" x 3 3/4" \$ 314.00



EW707 Arched Window Escutcheon
1 3/8" x 4 1/2" \$ 314.00



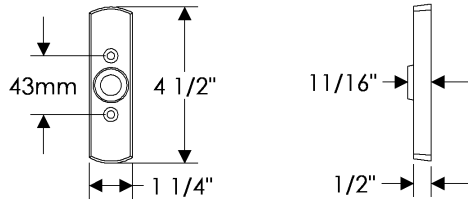
EW705 Arched Window Escutcheon
1 1/2" x 3" \$ 186.00



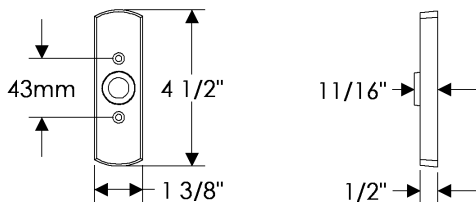
EW708 Arched Window Escutcheon
1 1/2" x 4 1/2" \$ 196.00

- Price includes your choice of any lever.
- Combinations are shown with L104 Hook Lever for illustrations only. Refer to Section A for desired lever.
- Specify metal, patina, sash thickness, handing, screws, spindle length, and type of window designed for.
- Supplied with M5 x .8 x 40 mm screws and 7 mm spindle unless otherwise specified.
- Levers index at 3, 6, 9, and 12 o'clock positions.

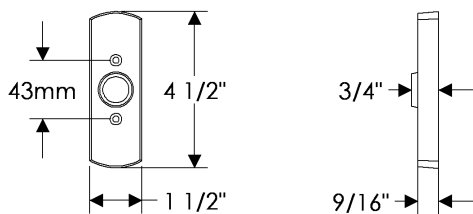
Window Trim Sets



EW507 Curved Window Escutcheon
 1 1/4" x 4 1/2" \$ 314.00



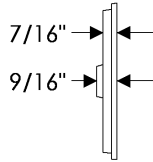
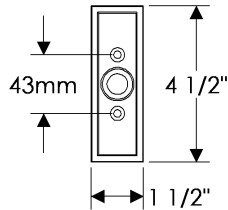
EW501 Curved Window Escutcheon
 1 3/8" x 4 1/2" \$ 314.00



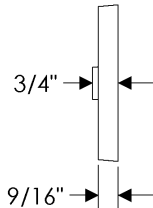
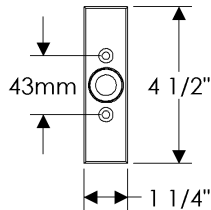
EW508 Curved Window Escutcheon
 1 1/2" x 4 1/2" \$ 196.00

- Price includes your choice of any lever.
- Combinations are shown with L104 Hook Lever for illustrations only. Refer to Section A for desired lever.
- Specify metal, patina, sash thickness, handing, screws, spindle length, and type of window designed for.
- Supplied with M5 x .8 x 40 mm screws and 7 mm spindle unless otherwise specified.
- Levers index at 3, 6, 9, and 12 o'clock positions.

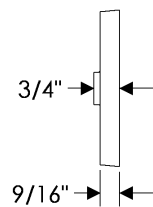
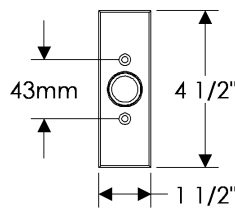
Window Trim Sets



EW308 Stepped Window Escutcheon
 1 1/2" x 4 1/2" \$ 314.00



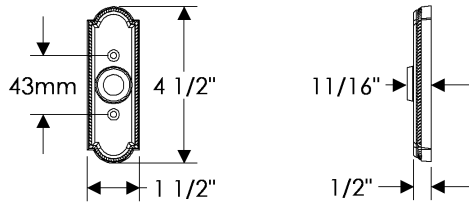
EW225 Metro Window Escutcheon
 1 1/4" x 4 1/2" \$ 314.00



EW202 Metro Window Escutcheon
 1 1/2" x 4 1/2" \$ 196.00

- Price includes your choice of any lever.
- Combination is shown with LW05 Mini Ellis Lever for illustrations only. Refer to Section A for desired lever.
- Specify metal, patina, sash thickness, handing, screws, spindle length, and type of window designed for.
- Supplied with M5 x .8 x 40 mm screws and 7 mm spindle unless otherwise specified.
- Levers index at 3, 6, 9, and 12 o'clock positions.

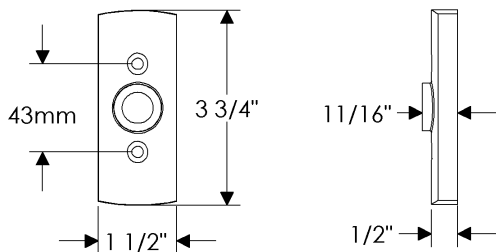
Window Trim Sets



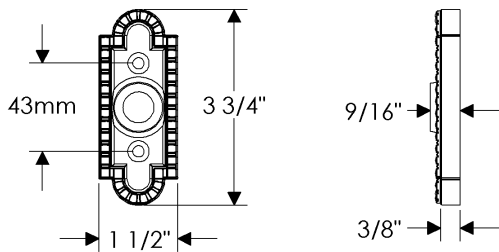
EW005 Ellis Window Escutcheon
 1 1/2" x 4 1/2" \$ 340.00

- Price includes your choice of any lever.
- Combination is shown with L104 Hook Lever for illustrations only. Refer to Section A for desired lever.
- Specify metal, patina, sash thickness, handing, screws, spindle length, and type of window designed for.
- Supplied with M5 x .8 x 40 mm screws and 7 mm spindle unless otherwise specified.
- Levers index at 3, 6, 9, and 12 o'clock positions.

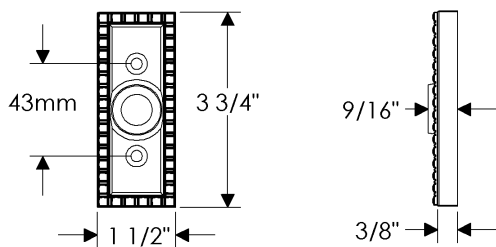
Window Trim Sets



EW30500 Convex Window Escutcheon
1 1/2" x 3 3/4" \$ 340.00



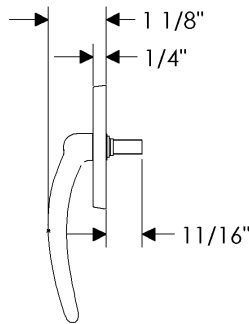
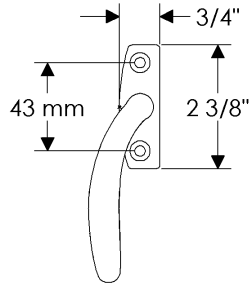
EW30600 Corbel Arched Window Escutcheon
1 1/2" x 3 3/4" \$ 340.00



EW30700 Corbel Rectangular Window Escutcheon
1 1/2" x 3 3/4" \$ 340.00

- Specify metal, patina, sash thickness, handing, screws, spindle length, and type of window designed for.
- Supplied with #10-32 x 1" screws and 7 mm spindle unless otherwise specified.

Window Trim Sets



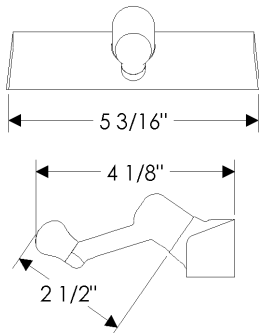
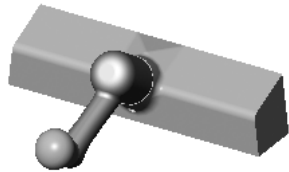
WL210 Sash Lock
 3/4" x 2 3/8" \$ 196.00

WL211 Sash Lock - Dummy
 3/4" x 2 3/8" \$ 196.00

- * Designed for Marvin push out
- * Left hand shown - handing not typical to standard specifications

- Specify metal and patina (and handing for the WC140 and WC141 series).

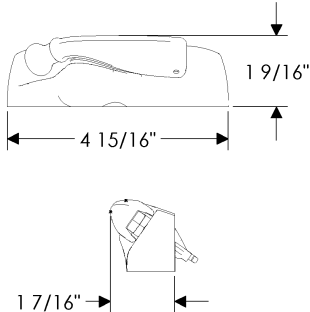
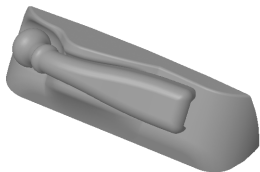
Window Cranks



Casement Window Hardware*

WC100 Crank & Cover \$ 160.00

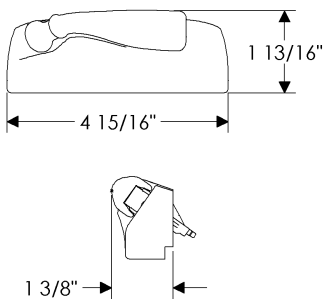
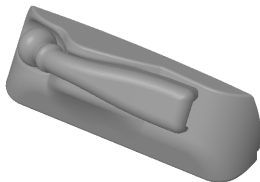
- * Designed for Truth Entry Guard.
- * Can be modified for compatibility with Ashland Mechanisms. Call for pricing.



Casement Window Hardware*

WC140 Crank & Cover \$ 246.00

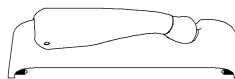
- * Designed for Marvin Ultimate Case Master
- * For handing examples, see image below.



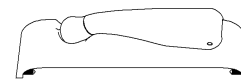
Casement Window Hardware*

WC141 Crank & Cover \$ 246.00

- * Designed for Marvin Ultimate Replacement Case Master
- * For handing examples, see image below.



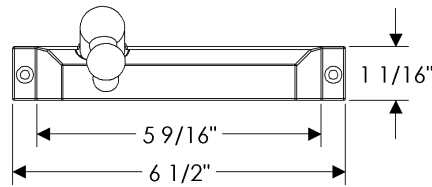
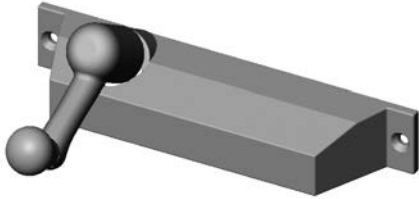
LEFT HAND COVER (L)



RIGHT HAND COVER (R)

- Specify metal, patina, and handing.

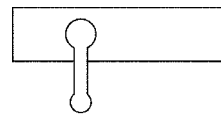
Window Cranks



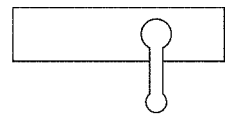
Casement Window Hardware*

WC160 Crank & Cover \$ 165.00

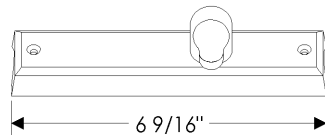
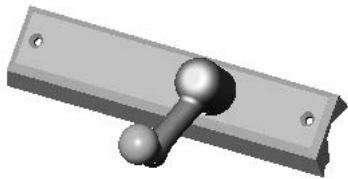
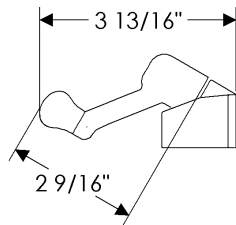
* Specify Truth Encore or Truth Maxim



LEFT HAND WINDOW (L)



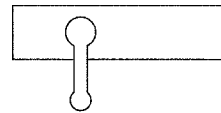
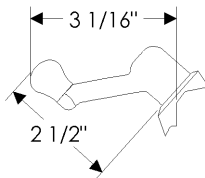
RIGHT HAND WINDOW (R)



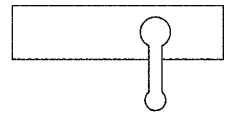
Casement Window Hardware*

WC200 Crank & Cover \$ 165.00

* Designed for Pella Architect and Designer Series models.



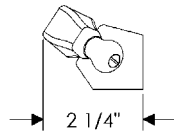
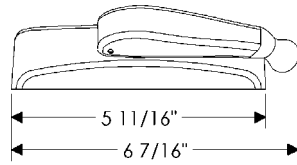
LEFT HAND WINDOW (L)



RIGHT HAND WINDOW (R)

- Specify metal, patina, and handing.

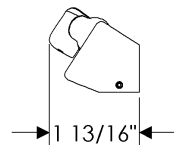
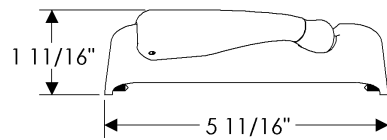
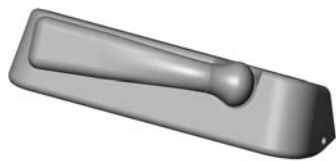
Window Cranks



Casement Window Hardware*

WC400 Crank & Cover \$ 246.00

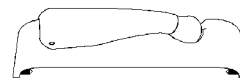
- * Designed for Truth Entry Guard.
- * Can be modified for compatibility with Ashland Mechanisms. Call for pricing.



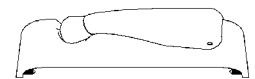
Casement Window Hardware*

WC450 Crank & Cover \$ 246.00

- * Designed for Truth Encore.
- * For most situations a left hand cover will work with a left hand window. Narrow windows may be an exception. Verify cover handing with images below.
- * For handing examples, see image below.



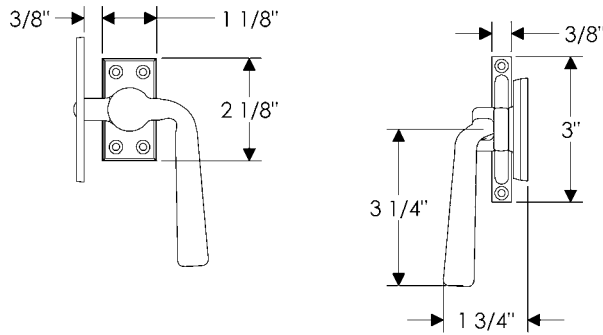
LEFT HAND COVER (L)



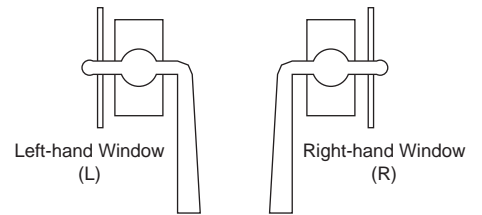
RIGHT HAND COVER (R)

- Specify metal, patina, and handing.

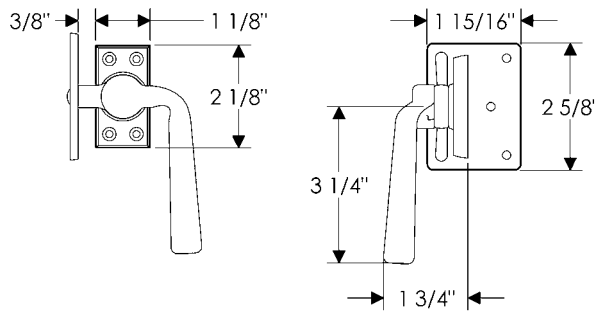
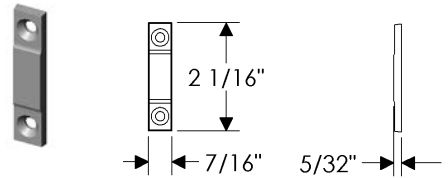
Casement Latches



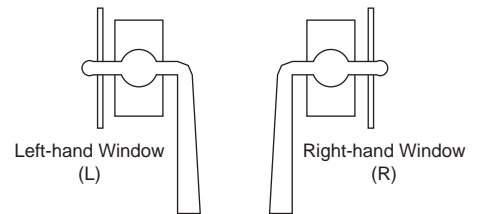
LC300 Casement Latch
with **LC303** Mortise Strike \$ 262.00



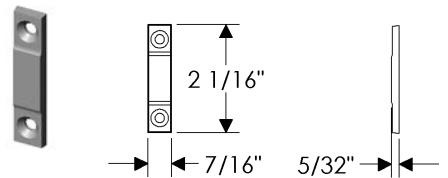
- Optional strike: **LC307**



LC300 Casement Latch
with **LC305** Universal Strike \$ 274.00

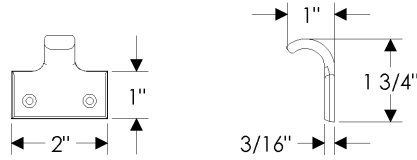


- Optional strike: **LC307**

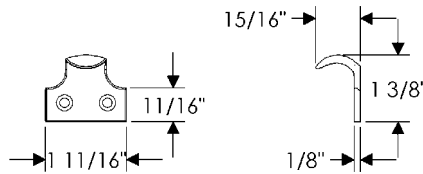


- Specify metal and patina (and handing for the ULL200 Sash Lock).

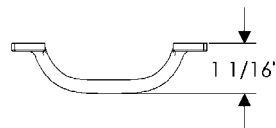
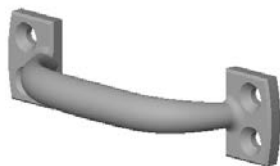
Sash Lifts



SFP100 Sash Lift \$ 42.00

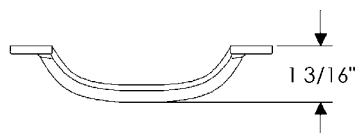
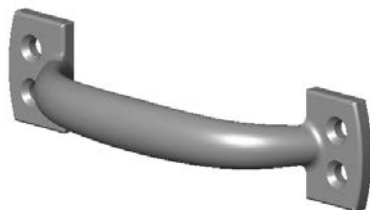
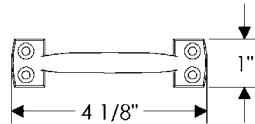


WSL20 Sash Lift \$ 39.00



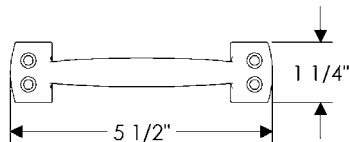
WSL10 Double-Hung Sash Lift \$ 50.00

* Compatible with Marvin Ultimate double hung.



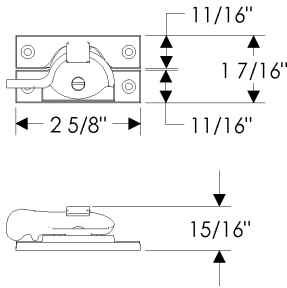
WSL40 Double-Hung Sash Lift \$ 85.00

* Compatible with Marvin Ultimate double hung magnum.



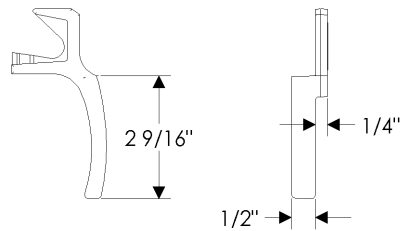
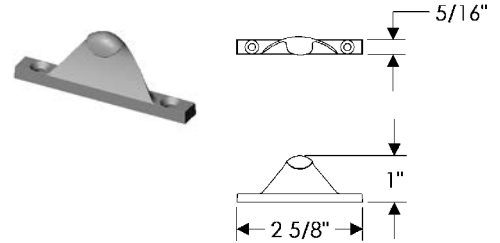
- Specify metal and patina (and handing for the ULL200 Sash Lock).

Sash Locks



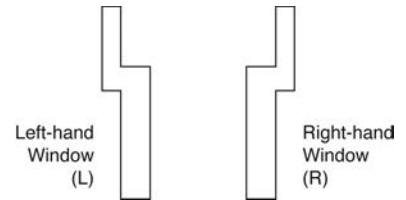
SL100 Sash Lock \$ 99.00

- Optional strike: **SLK105**



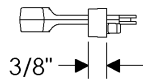
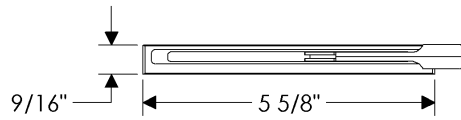
ULL200 Sash Lock* \$ 49.00

- * Designed for Pella windows.
Call for compatibility.



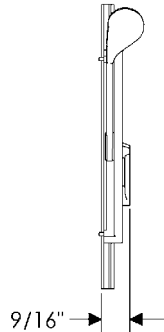
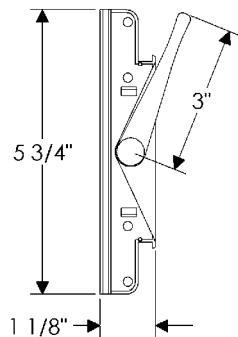
- Specify metal and patina.

Sash Locks



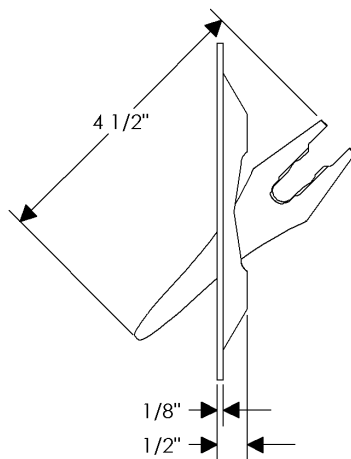
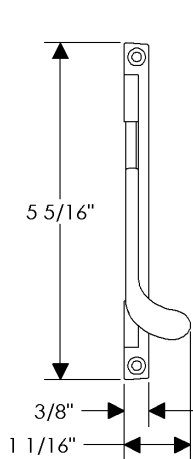
LC730 Sash Lock* \$ 278.00

- * Designed for Sierra Pacific windows.
- * Use in conjunction with WC450.



WL10 Sash Lock* \$ 210.00

- * Designed for Marvin Casemaster windows.
- Call for compatibility.

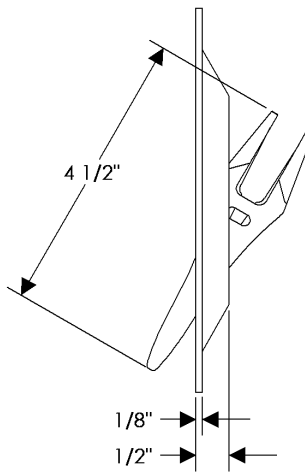
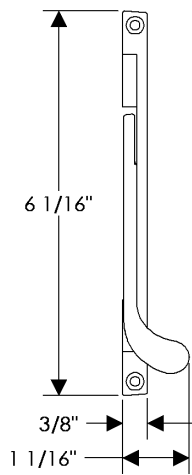


LC500 Sash Lock* \$ 278.00

- * Designed for Truth Mirage Concealed Multi-point Locking Systems.

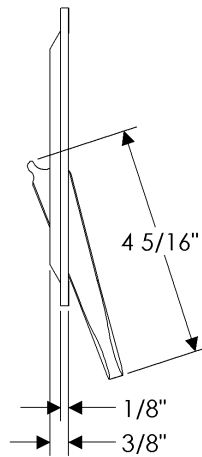
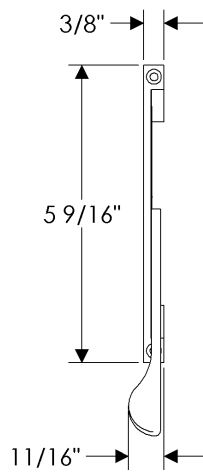
- Specify metal and patina.

Sash Locks



LC510 Sash Lock* \$ 278.00

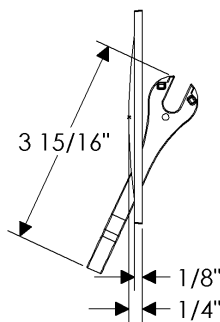
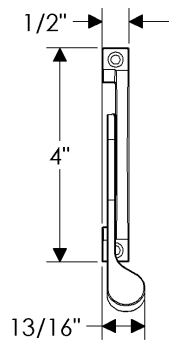
* Designed for Ashland Multi-point Casement Locks.



LC600 Sash Lock* \$ 278.00

* Designed for Truth Encore Multi-point Casement Locks.

* Field modifications required, call for specifications.

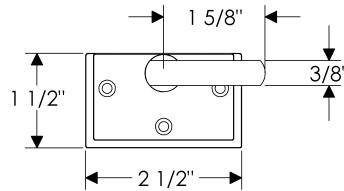
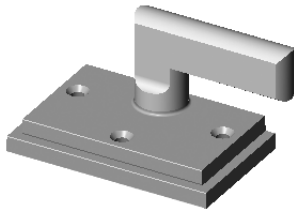


WL180 Sash Lock* \$ 278.00

* Designed for Marvin Ultimate Casemaster.

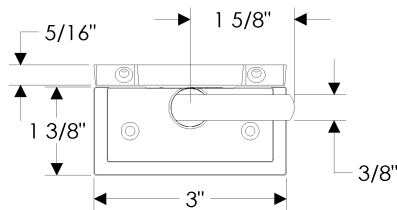
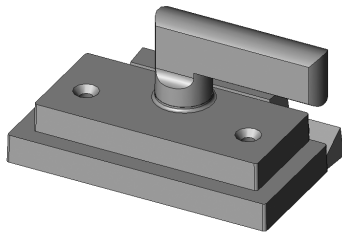
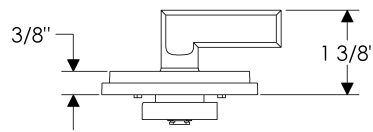
- Specify metal and patina.

Double-Hung Sash Lock



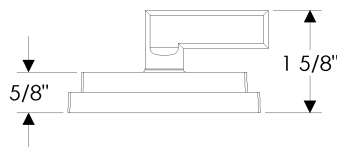
DHSL100 Double-Hung Sash Lock . . \$ 132.00

- Compatible with Pella Model 2 Architect series windows
- Includes strike (not pictured)



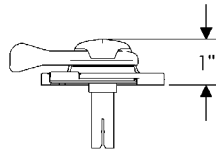
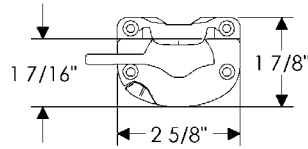
DHSL200 Double-Hung Sash Lock . . \$ 181.00

- Compatible with Pella Model 3 Architect series windows
- Includes bronze strike



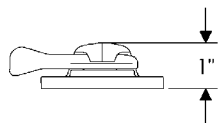
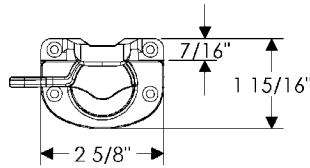
- Specify metal and patina.

Double-Hung Sash Lock



WD10 Double-Hung Sash Lock \$ 229.00

- Compatible with Marvin Ultimate double hung

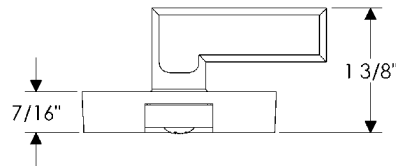
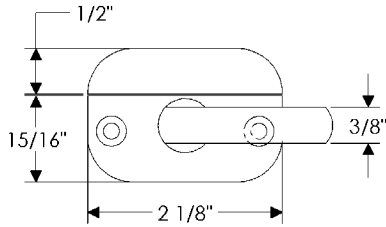


WD130 Double-Hung Sash Lock \$ 214.00

- Compatible with Marvin Ultimate double hung magnum

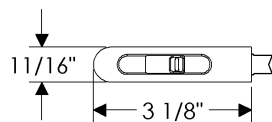
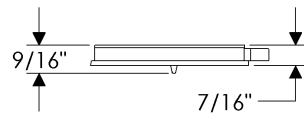
- Specify metal and patina.

Double-Hung Sash Lock



DHSL700 Double-Hung Sash Lock . . \$ 181.00

- Designed for Sierra Pacific
- Includes bronze strike
- Used in conjunction with LC710 Tilt Lock

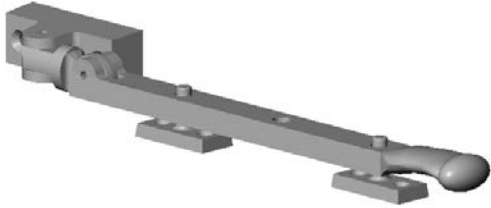


LC710 Tilt Lock \$ 171.00

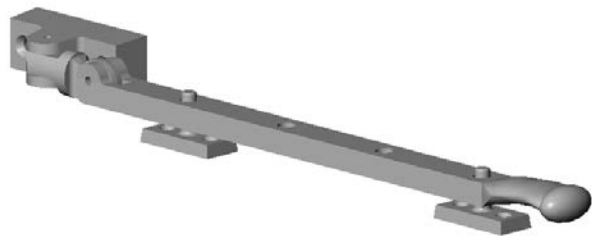
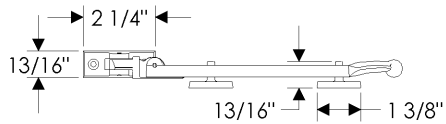
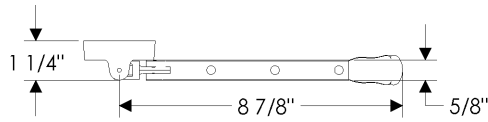
- Designed for Sierra Pacific
- Used in conjunction with DHSL700 Double Hung Sash Lock

- Specify metal and patina.

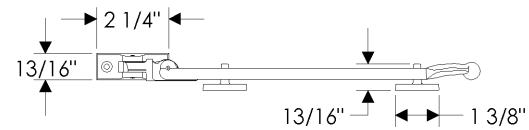
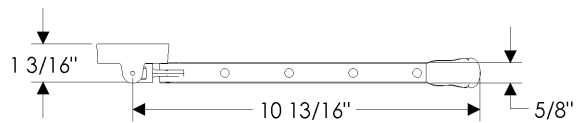
Casement Adjusters



CA10 Casement Adjuster \$ 291.00

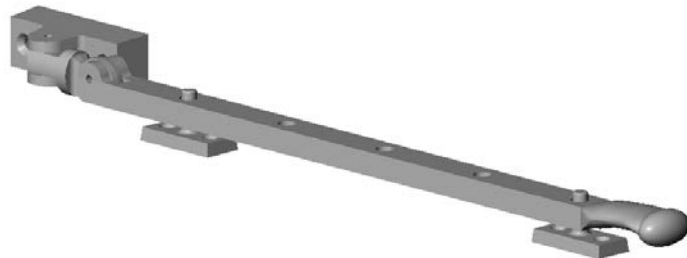


CA12 Casement Adjuster \$ 295.00

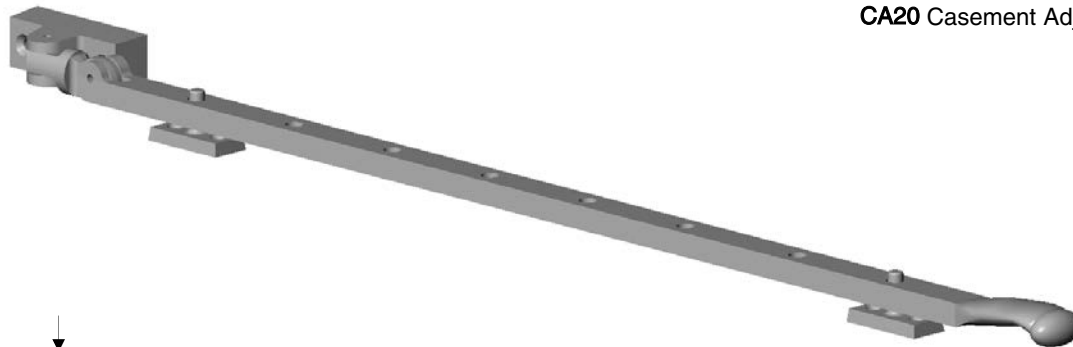
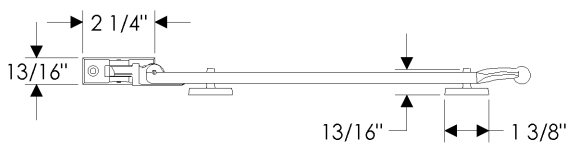
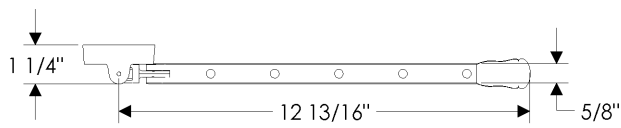


- Specify metal and patina.

Casement Adjusters



CA14 Casement Adjuster \$ 300.00



CA20 Casement Adjuster \$ 346.00

