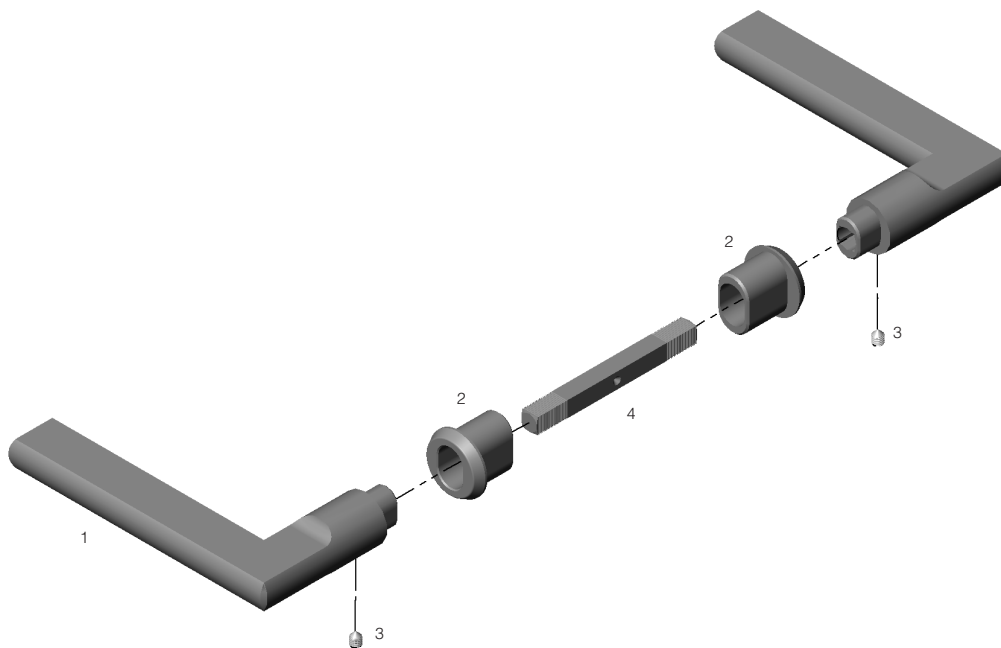


ROCKY MOUNTAIN

H A R D W A R E

Element Dummy - Lever to Lever - Double Door Active/Inactive

- 1 Lever
- 2 Escutcheon
- 3 Lever Set Screw
- 4 Spindle



ROCKY MOUNTAIN

H A R D W A R E

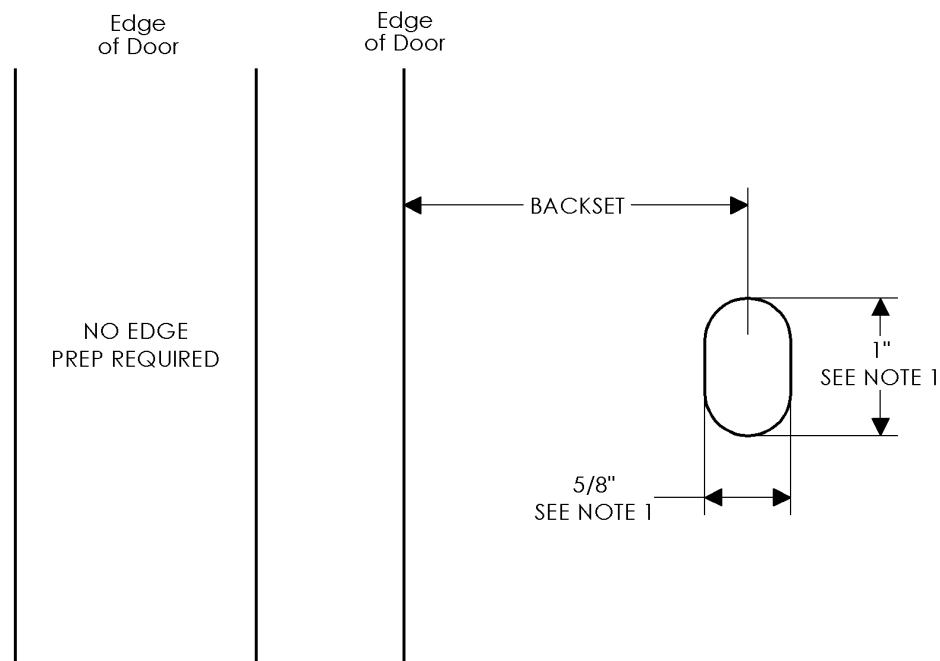
ELEMENT COLLECTION - DOOR PREPARATORY SPECIFICATIONS

Dummy Lever to Lever - Interior & Exterior

Applicable for steel or hardwood doors.

Notes:

1. Tight tolerances required for press fit of escutcheon.
2. Half dummy application, requires a custom door preparation. Please call Rocky Mountain Hardware for details.
3. Standard location of hardware is determined by placing the lever or knob 36" above finish floor. However, this may be adjusted for special applications.



Element Dummy Installation Instructions

1. Mark the Door

The standard location of the of the lever or knob at 36" above the finished floor. **However, this may be adjusted for special applications. Layout the escutcheon on the door before boring to confirm it is placed at the appropriate height for the size of the escutcheon/door.**

2. Compare Lock, Hardware Trim and Door Conditions

Verify that the stile width is adequate to accept hardware trim. Make sure the hardware trim does not interfere with the door stop or the astragal and does not overlap the door panel or glass.

3. Mark Face of Door

Use the Door Preparatory Specifications sheets to determine the appropriate size and locations of the oval hole on the face of the door for the hardware trim. Please note the correct backset.

4. Drill Holes

Verify all dimensions and locations from Step 3, then machine the holes.

5. Lever/ Knob Trim

Install levers with escutcheon onto spindles. With both of the levers tight to the door, tighten set screws.

General Notes

1. This door preparatory specification is applicable for double door situations with opposing active panels.
2. Make sure all door conditions are compatible with the trim before drilling or machining the door. If there are any issues with the trim, please contact the Distributor that provided the hardware immediately.
3. Hardware should be removed from door before painting or finishing of the door. Allow finish to fully cure before reinstalling hardware. Refer to paint manufacturer for instructions and curing times.